

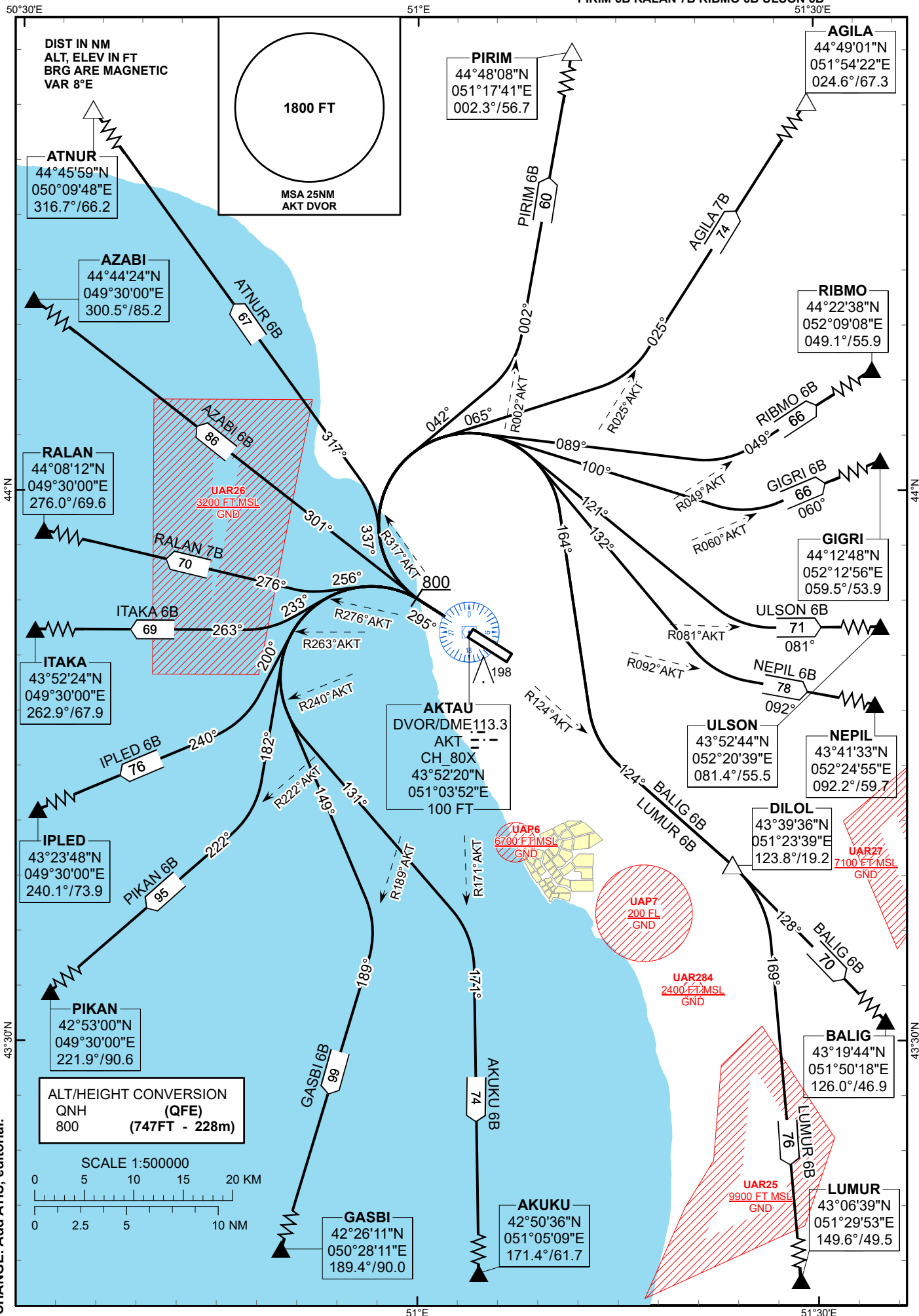
STANDARD DEPARTURE
CHART - INSTRUMENT
(SID) - ICAO

TRANSITION ALTITUDE
10000 FT

AKTAU TOWER 120.7
AKTAU ATIS (EN) 130.1
AKTAU ATIS (RU) 126.2

AGILA 7B AKUKU 6B ATNUR 6B AZABI 6B
BALIG 6B GASBI 6B GIGRI 6B IPLED 6B
ITAKA 6B LUMUR 6B NEPIL 6B PIKAN 6B
PIRIM 6B RALAN 7B RIBMO 6B ULSON 6B

AKTAU
RWY 29



CHANGE: Add ATIS, editorial.

STANDARD DEPARTURE ROUTES – INSTRUMENT (SID) AKTAU RWY 29	
PIRIM 6B After take-off climb straight ahead to 800 FT, turn RIGHT on track 042° until intercept R 002°AKT, then proceed to PIRIM (R002.3° D56.7 AKT). Crossing FL at PIRIM are by ATC.	AKUKU 6B After take-off climb straight ahead to 800 FT, turn LEFT on track 131° until intercept R 171°AKT, then proceed to AKUKU (R171.4° D61.7 AKT). Crossing FL at AKUKU are by ATC.
AGILA 7B After take-off climb straight ahead to 800 FT, turn RIGHT on track 065° until intercept R 025°AKT, then proceed to AGILA (R024.6° D67.3 AKT). Crossing FL at AGILA are by ATC.	GASBI 6B After take-off climb straight ahead to 800 FT, turn LEFT on track 149° until intercept R 189°AKT, then proceed to GASBI (R189.4° D90.0 AKT). Crossing FL at GASBI are by ATC.
RIBMO 6B After take-off climb straight ahead to 800 FT, turn RIGHT on track 089° until intercept R 049°AKT, then proceed to RIBMO (R049.1° D55.9 AKT). Crossing FL at RIBMO are by ATC.	PIKAN 6B After take-off climb straight ahead to 800 FT, turn LEFT on track 182° until intercept R 222°AKT, then proceed to PIKAN (R221.9° D90.6 AKT). Crossing FL at PIKAN are by ATC.
GIGRI 6B After take-off climb straight ahead to 800 FT, turn RIGHT on track 100° until intercept R 060°AKT, then proceed to GIGRI (R059.5° D53.9 AKT). Crossing FL at GIGRI are by ATC.	IPLIED 6B After take-off climb straight ahead to 800 FT, turn LEFT on track 200° until intercept R 240°AKT, then proceed to IPLIED (R240.1° D73.9 AKT). Crossing FL at IPLIED are by ATC.
ULSON 6B After take-off climb straight ahead to 800 FT, turn RIGHT on track 121° until intercept R 081°AKT, then proceed to ULSON (R081.4° D55.5 AKT). Crossing FL at ULSON are by ATC.	ITAKA 6B After take-off climb straight ahead to 800 FT, turn LEFT on track 233° until intercept R 263°AKT, then proceed to ITAKA (R262.9° D67.9 AKT). Crossing FL at ITAKA are by ATC.
NEPIL 6B After take-off climb straight ahead to 800 FT, turn RIGHT on track 132° until intercept R 092°AKT, then proceed to NEPIL (R092.2° D59.7 AKT). Crossing FL at NEPIL are by ATC.	RALAN 7B After take-off climb straight ahead to 800 FT, turn LEFT on track 256° until intercept R 276°AKT, then proceed to RALAN (R276.0° D69.6 AKT). Crossing FL at RALAN are by ATC.
BALIG 6B After take-off climb straight ahead to 800 FT, turn RIGHT on track 164° until intercept R 124°AKT, then proceed to DILOL (R123.8° D19.2 AKT), after crossing DILOL proceed on track 128° to BALIG (R126.0° D46.9 AKT). Crossing FL at BALIG are by ATC.	AZABI 6B After take-off climb straight ahead to 800 FT, proceed on track 301° to AZABI (R300.5° D85.2 AKT). Crossing FL at AZABI are by ATC.
LUMUR 6B After take-off climb straight ahead to 800 FT, turn RIGHT on track 164° until intercept R 124°AKT, then proceed to DILOL (R123.8° D19.2 AKT), after crossing DILOL proceed on track 169° to LUMUR (R149.6° D49.5 AKT). Crossing FL at LUMUR are by ATC.	ATNUR 6B After take-off climb straight ahead to 800 FT, turn RIGHT on track 337° until intercept R 317°AKT, then proceed to ATNUR (R316.7° D66.2 AKT). Crossing FL at ATNUR are by ATC.